



# Gold Canyon United Methodist Church

**Office address:**

6640 S. Kings Ranch Road

Gold Canyon, AZ 85218

Phone: (480) 982-3776

Fred Steinberg, Senior Pastor

**Church E-Mail:**

Goldcanyonumc@mindspring.com

Revstein@pipeline.com

Prayer Chain: msmallloy02@msn.org

**Web site:** www.goldcanyonumc.org

Vol. 21

October 2008

NO. 10

**From The Pastor:****“The Hidden Obstacles  
of Life”**

In July of 2004 Rev. Michael Eaton of Desert Chapel United Methodist Church and I took our bikes up a ski lift near Mount Hood, Oregon. When we reached the top I took a winding trail down the face of the mountain. As I followed this

switchback trail down to the bottom I had to be careful to avoid rocks that would throw me over the handlebars. After riding a ½ mile I noticed that I couldn't see Michael any more. I looked carefully but no Michael. I guessed maybe he had gone another way so I moved on and then after another ¼ mile I stopped and looked again. That was when I saw Michael pushing his bike and walking very slowly. He was walking too slowly. Suddenly I realized he was hurt.

I biked back up the hill to meet him and he said he had broken his shoulder. I took his bike from him and he painfully hiked over to the top of the lift and got a ride down. After visiting the first-aid hut I drove him into the closest hospital where it was determined he had separated and broken his shoulder. As we sat together he told me he had been avoiding the rocks just fine but decided to ride off the trail to find smoother ground. The problem was the grass was high enough that he couldn't see what was in the grass. Evidently a rock stopped his front wheel cold and he was thrown over the handlebars and onto his shoulder. He never saw the rock.



Life is full of hidden obstacles. We look for a smoother path only to smash upon the boulders hidden there. I talk to many people who struggle with physical, emotional, family, financial, or spiritual problems. These problems hide in the grass and throw our lives for a loop. When our lives are turned upside down, we need all the spiritual strength we can find. We need all the Christian friends we can find. I can't imagine going through life's difficulties alone. I know I need God's guidance and strength when I hit those rocky patches. I need the church to encourage me and hold me accountable.

I know sometimes people criticize Christians for needing God as a crutch. But when you are hurt you need a crutch to get better.

Grace and Peace,

*Fred*

**Who We Worship With: Making New Friends  
Will not be featured this month. Please send your  
suggestions to Suzanne for next month!**

*We at GCUMC are blessed to have so many wonderful and talented people joining together in worship. There are so many of us, it's difficult to get to know one another. This month, we are continuing the introduction of interesting people you just might sit next to some Sunday. While it will be impossible to introduce everyone in such a large congregation, we thought it would be fun to try! If you know of someone you'd like to see profiled in the RoadRunner, please contact Suzanne in the church office at 480-982-3776 for guidelines.*



## FORWARD BY FAITH

By Grover Wallace

In October 2001, the congregation of our church approved a plan to finance and support the construction of a new sanctuary to serve God and our community. The commitment we made requested each person in our congregation to share our time, efforts, talents and finances to ensure that our commitment to God would provide a facility to allow any person regardless of their status to seek and worship God. We also committed to God that the new facility would serve God, our community, the sick, those in need, the homeless, the hungry and teach God's Word. You will recall in our initial campaign, "Building in Spirit", we pledged and donated more than \$1,800,000.00 to finance the construction. This allowed us to qualify for and borrow additional money to construct our new sanctuary. Our second three year campaign, "Building in Spirit," provided more than \$1,600,000.00 in pledges to continue to borrow money to finance our \$5,299,000.00 project. Our debt at the beginning of 2008 was \$3,500,050.00, and after negotiating a new lower interest rate on our mortgage, our payment was reduced to \$28,680.00 (including principle and interest) monthly.

"Commit, committed—to obligate or to pledge one's self to something."

Dictionary—NIV Life Application Study Bible-  
Dictionary/Concordance

*"Then the whole Israelite community withdrew from Moses' presence and everyone who was willing and whose heart moved him came and brought an offering to the Lord for the work on the Tent of Meeting, for all its service,..."*

Exodus 35:20-21 (NIV)

*"Delight yourself in the Lord  
And He will give you the desires of your heart.  
Commit your way to the Lord;  
trust in Him and He will do this:  
He will make your righteousness shine like the dawn,  
the justice of your cause like the noonday sun."*

Psalm 37:4-6 (NIV)

A Psalm of David

*"And here is my advice about what is best for you in this matter: Last year you were the first not only to give but also to have the desire to do so. Now finish the work, so that your eager willingness to do it may be matched by your completion of it, according to your means. For if the willingness is there, the gift is acceptable to what one has, not according to what he does not have."*

II Corinthians 8:10-12 (NIV)

The preceding three quotes from both the Old and New Testaments are prime examples of commitments that people throughout time have made to our God. In the excerpt from Exodus, the Israelites gave cheerfully and generously to the Tent of Meeting project after God commanded Moses to collect offerings to build the Tabernacle. After Moses relayed God's message to the Israelites, they showed an example of faithful people being generous.

With the Psalm of David, the Israelites were encouraged to commit everything they had to the Lord. In his letter to the church of Corinth, Paul declares they are an outstanding example of a congregation willing to commit and contribute what they could to a program. Paul encouraged the people to give in proportion to what God has given to them. But Paul also encouraged the congregation to give until it hurts or to give sacrificially and responsibly.

At the present time, our country is facing very tough economic times and many people in our area have or will face loss of their jobs and/or foreclosure on their homes. Some with no place to go when they are forced to vacate their homes. Many in our congregation are living on fixed incomes and with the skyrocketing prices on food, fuel and other necessities are facing severe adjustments to their budgets. The poor economic situation sometimes leads to reduced contributions to our church budget, which in turn affects our ability to maintain the level of our programs, the proper maintenance of our facilities, the operation of our beautiful worship facilities, and help for those in need, ultimately requiring us to adjust our general operating

*Continued*

Continued from previous page

budget. If our church income were to erode, it could certainly affect our ability to meet daily expenses, salaries, utility bills and even our ability to meet mortgage payments. At this point we have not been seriously affected by the economic situation. We all must pray to our Lord that the economy will improve and that we can all maintain our financial commitment to our God and our church. As we mentioned in our article last month, we contributed the least amount (\$19,435.00) since we started our campaign giving in March, 2002. However, in August, as is normal for this congregation, we rebounded, contributing some \$34,148.00 to our building fund — almost \$15,000.00 more than the previous month. During the first six months of our giving year, you have contributed \$186,797.00 or 37.4% of our annual goal of \$500,000.00. Whether we achieve our goal during this giving year remains to be seen, but you have demonstrated our congregation’s ability to respond in the time of need.

May God Bless Your Continued Efforts to Meet the Commitment We Made Even In These Tough Economic Conditions.

*“Let no debt remain outstanding except the continuing debt to love one another.”*

Romans 13:8

# DISCIPLE

*Disciple* Classes will be starting soon! Watch your bulletin inserts for additional information. If you haven't taken a *Disciple* Class before, you must start with *Disciple 1*—after that, you may take any of the others in any order. *Disciple 1* will be offered on Sunday nights at 6:30 pm in the Music Room **beginning October 5th**. The class will be facilitated by Suzanne Jacobson, Lay Speaker and seminary student



## DONATIONS & ATTENDANCE

For if the eagerness is there, the gift is acceptable according to what one has—not according to what one does not have.

2 Corinthians 8:12

| August       | 2006  |        | 2007  |        | 2008  |        | 2007        | 2008        |
|--------------|-------|--------|-------|--------|-------|--------|-------------|-------------|
|              | Gen.  | Build. | Gen.  | Build. | Gen.  | Build. | Worship All | Worship All |
| 1st          | 13098 | 9530   | 14109 | 10054  | 30326 | 13046  | 418         | 471         |
| 2nd          | 10062 | 4119   | 8204  | 3991   | 9008  | 5922   | 488         | 502         |
| 3rd          | 10077 | 7378   | 7675  | 3222   | 7697  | 6384   | 456         | 528         |
| 4th          | 5889  | 3276   | 7721  | 3923   | 8006  | 4450   | 540         | 466         |
| 5th          | _____ | _____  | _____ | _____  | 7693  | 4347   | _____       | 546         |
| <b>Total</b> | 39126 | 24303  | 37709 | 21190  | 62730 | 34148  | 1902        | 2513        |

## International Missions

"The world is my parish." – John Wesley

By Jackie Douglass

As we continue our efforts to become more involved in international missions as a church and as individuals, I want to inform you about upcoming opportunities. First of all, if you have an interest and desire to travel abroad for mission work, there is a group from the First United Methodist Church at the Chicago Temple traveling to Chile in January. We have been extended an invitation to join this group. The main details are as follows:

- **Date** - January 1-19, 2009
- **Approximate cost** – round-trip airfare \$2,000; as well as in-country costs for food, housing, and lumber for the pews = \$600.00
- **Work project** – finishing church pews for the Second Methodist church; daily bus ride to the work site, approximately 30 minutes each way to a town 2,000' above the town of Iquique, Chile
- **Accommodations** – work team members are housed in dorms, two-persons to a room, in the First Methodist Church. There is access to restroom and shower facilities in the same building (downstairs; sleeping is upstairs) – no

promise of warm water (although January in Chile is summer time!)

**Meals** - Lunch and dinner are prepared for the work team by the ladies of the church; breakfast is prepared by work team members, which includes interesting trips to a local market to buy food for breakfast!

If any or all of this piques your interest and you'd like more information, please contact Ruthmary Anderson by phone or e-mail: 983-0161; [don101mary@msn.com](mailto:don101mary@msn.com).

**Mark your calendars** – the International Missions Committee will be holding an "International Missions Event" on **Sunday, March 8, 2009**. More details will follow in subsequent newsletters and bulletins.

### A MESSAGE FROM PROJECT HELP:

*Dear Gold Canyon United Methodist Church Members,*

*It is my honor to be writing you this heartfelt thank you note from Apache Junction Unified School District/Project Help program. We want to thank you for new back to school clothes and goods.*

*Many of your members brought us donations not leaving their name for a thank you, so we want to thank them through you.*

*Our program is supported 100% by community donations. We would not be able to assist as many students and their families without you. We truly believe if a child does not have a roof over their head, lights to do homework by, warm food to eat, water to bath in and decent clothing to wear, they will not be able to go to school and achieve their goals and become a successful adult.*

*We ask that you continued to remember that our students need you and your continued support. Thank you.*

*We wish you and yours good health and happiness!*

*Sincerely,  
Lailoni Capozzi*

### Current UMCOR Emergencies

To donate to UMCOR on behalf of the following emergencies, please write your check to GCUMC and write "UMCOR Advance ##### (fill in the appropriate number)" on the memo line. 100% of your donation will go to those affected by the emergency.

**Hurricane Response  
Hurricanes 2008  
UMCOR Advance #3019695**

**Haiti Hurricane Response  
Haiti Emergency  
UMCOR Advance #481325**

**Georgia Conflict  
Georgia Emergency  
UMCOR Advance #250305**

For more ways to help, or to donate online, go to: <http://new.gbgm-umc.org/umcor/>




### Time to enter GCUMC's Bashas' number again!

By Betty Rolley

As you may know, the bus is now a reality due to a generous loan from someone who attends our church. But we still have one more payment of \$5,000 on the loan and continued insurance, license fees and general maintenance expenses. Thanks so much to all of you who have supported these programs over the past few years!! A total of \$75,228 has been raised as of June 2008!!

Next time you shop at Bashas' beginning September 1st, please ask them to attach the church's number (#23886) to your 'Thank You' card. Last year the church earned \$2,227 from **THIS** program toward the bus fund. You must do this **once a year, in the fall**, at the start of a new 'Thanks-a-Million' program. The program runs from September 1st to March 31st of the following year. Each time you shop, Bashas' will donate 1% to the church up to \$2,500. In seven years, we have earned \$15,284 from *this* program. Let's earn the maximum of \$2,500 this year by more people entering the church's number early on.

In May of 2006 Bashas' introduced a Community Support Card to replace their paper gift certificates - yea! Many of you wanted to use your charge card to be able to receive airline miles or cash rebates. You can do just that by using the Bashas' Community Support Card to pay for your groceries, drugs, etc. This is a **SEPARATE program** that earns the church 6% **IN ADDITION TO** the 1% explained above. There is no maximum to this program. Think what we can earn if you support **BOTH** programs! A Bashas' Community Support Card can be pur-

chased between services on Sunday mornings beginning Oct. 5th (or in the church office during the week). You can buy one for \$20, \$50 or \$100 and recharge it at the store **before** you check out for up to \$500 with a charge card, debit card or cash. Thus far, the church has earned \$39,165 from the Scrip Program making a grand total from Bashas' of \$54,449.

If you shop at Fry's, please purchase a \$20 or \$50 **rechargeable** gift card and each time you recharge the card at Fry's, the church earns 3%. In six years, we have earned \$11,603 from Fry's.

You can also sign up for Safeway rebates or pick up an Albertson/Osco card that you swipe at checkout. In six years, we have earned \$596 from Safeway and \$580 from Albertson's.

From the above figures you can readily see why we emphasize Bashas' and Fry's programs. But every little bit helps us reach our goal. Please support these easy to use **grocery programs that do not cost YOU anything extra** -- you still get the good sale prices and the church benefits. Thank you.



THANKS...

To Rev. Hu for his meaningful bedside prayer and for ALL the prayer warriors who marched into the Operating Room with me on August 12th for my breast cancer surgery. One Christian couple from our congregation was waiting for US to arrive at 6:30 AM to be admitted to the hospital!! Later the cards, flowers, phone calls and food reinforced your concern for my well being. All of your kindnesses were heart rendering. Yes, we sampled a sneak-peek into Heaven's love through family, friends and neighbors.

Lorraine Phillips  
Victor, too



### Third Saturday Coffee House & Open Mic

*Sponsored by the 10:50 am Praise  
Worship*

7:00 pm in the Koinonia Room  
October 18th, 2008

Come share your talents! Musicians, writers, poets, playwrights, artists! Bring your works (secular and/or spiritual) to share over coffee or tea. This monthly event is open to the public – bring your friends! Call Suzanne





## Christian Education...

With “Coach” Ellis Falk

*“Our mission is to bring the love of Christ and His teachings to learners of all ages on their spiritual journey, that they be transformed and thus positively affect our local and global communities.”*

### Preaching, Teaching, Music, Service and the Church Moves Forward...

Preaching becomes the clarion call from the pulpit for change and decision making in ones life. A call to act, to follow, to change and to obey the call of God as set forth by His servant in the presentation of timely sermons. Music calls us to the act of worship through enjoyment and expression of our faith in the hymns of the church. Teaching differs from preaching in that it is primarily a call for growth in the Christian life though study and understanding both individually and collectively of the truths contained in the Holy Scripture. Service is that unselfish act of love in giving, praying, helping and serving others as Christ has commissioned us to do. We should rejoice greatly in our church as all four are present for us to take advantage of in our faith walk with Christ.

Christian Education is that arm of the church that gives us the opportunity for growth in grace and faith through the study of the Word in small groups, Sunday School classes and discussion with other persons in the “Household of Faith.” While self study of the Bible has great value and merit, the collective wisdom of the saints through structured sessions and discussion can shed new revelations for all of us in our faith walk. Often we think that Christian Education is that which relates only to the children and the youth of the church. While this may be the beginning, our spiritual learning and spiritual maturation process is life long. Opportunities for spiritual growth and understanding can be found in attending an adult Sunday School class, the Disciple study program or other small group studies. If enough persons show interest, we will hold a mid-week Sunday School Class for adults on Thursday at 9:00 am each week. The sessions will follow the lesson plans used on Sunday, will last for no more than 90 minutes and will be charged with discussion and a new understanding of the Scripture. Lesson booklets will be provided. A sign-up sheet will be in the narthex. These session will be taught by Ellis Falk.

Children will be able to gain in understanding of their faith through the many activities of the church at their age level. Such activities include the Faith Zone. Children are now asking when we can gather for the singing of the Sunday School songs. Starting Wednesday, October 1st at 4:30 pm, children will be able to meet at the church for Wednesday learning, fun and fellowship sessions. The name will likely change from “Mountaineers” to “Pre-Teens for Christ.” The group will meet at 4:30 pm on each Wednesday of the month and is open to all children in 3rd—6th grades. The learning session will be followed by dinner and music under the direction of the church’s music department (for more information, see MUSIC NOTES).

#### The Acolyte Program:

Children, grades 3– 6 who wish to participate in the Acolyte program should let Mrs. Sharron Gingrich know of their interest. Sharron has volunteered to facilitate the training and scheduling of children in the program.

## The “Church Lady?” Hardly! Women and the UMC

From your local representative for the Commission on the Status and Role of Women (COSROW), Suzanne Jacobson. COSROW aims to ensure that the church benefits from the wisdom, life experience, and perspectives of women.

### Marjorie Matthews — Pioneer

In 1980, headlines across the country were splashed with headlines like “The Bishop is a Woman.” That was the year the United Methodist Church elected Marjorie Matthews the first female bishop in the UMC. Bishop Matthews, who was 60 years old at the time of her election. She led the Wisconsin Area for four years, retiring in 1984.

Born in Michigan, Matthews was one of six children. She began college at the age of 47, graduating from Central Michigan College. She entered seminary at Colgate Rochester in order to study theology in an ecumenical setting, graduating from there in 1970. Rev. Kathy Sage found a mentor in Marjorie Matthews and described her as being “personable, historic, feisty” Speaking at the celebration of the 20th anniversary of Matthew’s election, Sage quote Matthews as saying, “There are no models for me; I’ll have to make my own.” Bishop Matthews died in 1987.



# Youth Ministries

*With Heather Rodenberg*

Sunday School 9:30 am in the Education Building  
Youth Fellowship 6:30 pm Sundays in the Education Building

## Mission Trip 2009

During the week of June 14<sup>th</sup> through the 20<sup>th</sup> of 2009, 25 youth and adults will be in Artesia, New Mexico. We will be going east to help out with home building and remodeling. Our group will be joining 400 people from around the country. Artesia has a population of about 14,000 people. We will be helping the elderly, disabled, and disadvantaged people in the community. Not only will we be helping to improve their homes, but we will also be sharing the love of Jesus Christ with all the people with whom we come in contact. This can't be done without your help, please become a shareholder.



1 Share = \$400  
½ Share = \$200  
¼ Share = \$100



### Join Us for Youth Group

5<sup>th</sup> = 6:30 – 8:30pm

12<sup>th</sup> = 6:30 – 8:30pm

19<sup>th</sup> = 6:30 – 8:30pm

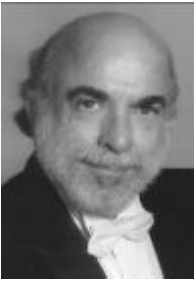
(Money due for Schnepf Farms outing)

26<sup>th</sup> = 4:45 – 9pm Outing to Schnepf Farms.

Big Thank You to the youth that helped clean the weeds on the path by the volleyball court. Way to go guys!



We will be going to Schnepf farms on October 26<sup>th</sup>. The cost is \$12.00 and is due by October 19<sup>th</sup>. Please be at the church by 4:45 pm, you don't want to miss the bus.



## Music Notes

We are getting into full swing with our fall schedule. **Ellis Falk** and I have spent some time putting together an exciting new program for 3-6 grades on Wednesdays from 4:30-6:15pm beginning October 1st. This program will feature some quality music learning time with **Kathy Nuss** (a retired elementary music teacher and member of our Chancel Choir) and myself, some quality time learning about God, Jesus and His church with Ellis Falk, some quality time playing games and having fun and, of course, dinner by the fabulous Ron & Linda Walker and helpers. Look elsewhere in the Roadrunner for more information.

This month we also begin our Youth Handbell Choir which will meet on Wednesdays from 6:00-7:00pm in the Sanctuary. We hope to have a full choir (9-13 ringers) who are willing to accept the challenge to perhaps learn a new instrument, have fun, and make music for our Lord and our congregation. This group will go to the Youth Handbell Camp in Glorietta, NM this summer in June and will return the week before the Youth Mission Trip.

Finally, this month we will have the first concert in our Performing Arts Series for 2008-2009 – the fabulous organist **Lew Williams**, the headline organist of **Organ Stop Pizza**, will present a concert in our Sanctuary on **Sunday, October 19 at 3:00pm!** As many of you know, Lew played for us at every **Community Celebration of Veterans** since we've been in our new Sanctuary. July 7th, he performed on the world's largest outdoor pipe organ, the Spreckels Organ in Balboa Park, San Diego, and recently performed on the Radio City Music Hall Theater Organ.

His program will be a potpourri of Classical, Big Band, Broadway, Marches, etc., so there will be something for everyone! Lew is one of the few people I know who is equally competent on Theatre Organ and Classical Organ. Lew has performed numerous times for the American Theater Organ Society (ATOS) as well as the American Guild of Organists (AGO, an international group of organists, choir directors and organ aficionados throughout the world). The only similarity between

international  
year of the  
organ  
2008-2009

American  
Guild of  
Organists



theater organ and classical organ is that they share a console that has similar looking keyboards, but function quite differently! Our organ is a classical Rodgers *Trillium* 967 with expanded MIDI (well over 1000 orchestral sounds). Lew will probably use most of what our organ has to offer during the course of his concert!

This concert is a registered event of the AGO's **International Year of the Organ** and is part of **Organ Spectacular**. The AGO is requesting every chapter throughout the world sponsor, host or support an Organ Concert on this day, Oct. 19, 2008. We are proud to be a part of this world-wide event! This concert is free and open to the public, we will take a free will offering. We do ask that everyone please bring a non-perishable food item per person for the Gold Canyon Food Bank.

As you may know, we are ready to begin the process of adding real wind-blown pipes to our electronic organ. The pipes would go on the wall directly behind the Choir. Proceeds from this concert, after Lew's fee, will go to the Organ Fund. The pipes will cost in the neighborhood of \$250,000. We hope you will be as generous as you are able. But, please come regardless and enjoy an afternoon of some fabulous music on this wonderful instrument played by one of the best in the business!

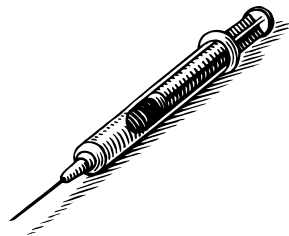
Blessings,

*Doug*

Douglas J. Benton

Director of Music Ministries





## Parish Nurse

By Susan Malloy, RN



**IT'S FLU VACCINATION TIME AGAIN....WE WILL NOT BE HAVING THEM AT THE CHURCH THIS YEAR DUE TO THE LATE NOTICE THAT THE VENDOR HAS STOPPED OFFERING THEM.**

MY RECOMMENDATION IS TO CALL FRY'S PHARMACY LOCATED AT HWY 60 & IDAHO ROAD (OFF APACHE TRAIL BETWEEN IDAHO ROAD AND PHELPS DRIVE). **CONTACT THEM AT 480-288-2143 TO MAKE AN APPOINTMENT PRICE IS \$25.00 OR IS FREE IF YOU HAVE MEDICARE B & D, MEDISUN, SECURE HORIZONS, HUMANA, HEALTHNET, AND SOME OTHERS. CALL THE PHARMACIST FOR DETAILS. AGAIN THE NUMBER TO CALL IS 480-288-2143.** THE CDC IS ENCOURAGING CHILDREN OF ALL AGES TO GET THE FLU VACCINATION THIS YEAR. SO PARENTS GET A CALL IN TO YOUR PEDIATRICIAN OR CONTACT FRY'S PHARMACY.

HOPEFULLY NEXT YEAR WE WILL BE ABLE TO HAVE THEM AT THE CHURCH.

Blessings of health and wellness to you, SUSAN

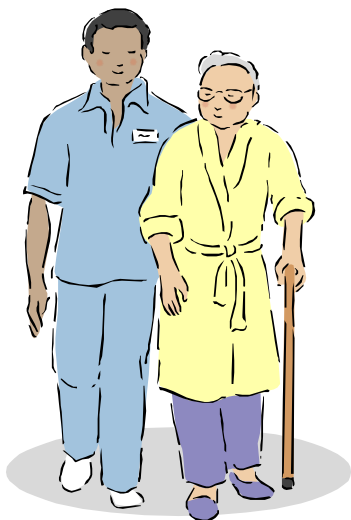
Favor Needed...

Michael and Susan Malloy will be having their daughter Tammy and 3 grandsons ages 6,9,16 here from Texas for 5 weeks starting Nov 24th until December 29th. Her husband Jim will be joining the "clan" December 23 to December 29th. Michael will hopefully be having shoulder surgery during that time frame. We are asking if anyone has an RV that they would allow us use (Or rent to us inexpensively) as sleeping accommodations and school room (she home schools) we would greatly appreciate it and it would remain parked in our large partially fenced, secured off the road yard, for that time frame with that purpose only, we would be eternally grateful. 😊 Please contact Susan at 480-982-6809

### Caregivers Seminar October 13th

Remember! Mondays 9:30—11:30am beginning October 13th **The POWERFUL TOOLS FOR CAREGIVERS Seminar** will begin and meet for six weeks at Sunland Springs Village off Baseline Road. Turn South at Springwood at the Activities Complex (tennis courts, etc.) and come to the Superstition Room. The program includes interactive workshops to assist you in all your duties as a caregiver while learning ways to care for yourself in the process. This provides great support, useful information, resources and educational materials including a **HELP-BOOK**. The cost at \$5.00 is the best deal in town. The facilitator is Tina Coffman of Serrine House. Look for informational flyers soon. Please call me to sign up and prepay the \$5.00 fee. If you leave me a message, please give me your name and phone number. The **DEADLINE IS OCTOBER 6th**. I would like to fill 7—8 slots for a total of 15 for this 6-week program. It's worth your time and money. I look forward to seeing you there. Please call me at 480-982-6809 if you're interested and get your name on the list Seating is limited.

480-982-6809 Susan Malloy



### Senior Service Volunteers Needed

The Senior Services Program in Apache Junction is looking for volunteer drivers for the Meals on Wheels program as they wish to expand into Gold Canyon. Anyone interested should contact Apache Junction Senior Services at the Multigenerational Building on

Idaho Road or contact Linda Starr from Red Mountain Senior Services at 480-218-2221.



## WITHIN THE CHURCH FAMILY

*By Hu & Wendy Rhymes, with a little help from Sadie and Hattie*

**ATTENTION: Hu & Wendy Rhymes DO NOT have a home phone. If you want to contact them and you don't have their CELL number, please contact the church office.**

**Sympathies:** The family of Carlos Chapman (Chris, Colby & Peter), upon Carlos' death; Lorie Fortner, upon the death of her husband, Jim; David Hoeg, upon the death of his wife; The family of Eugene Turner, upon his death; The family of Bud Yeager, upon his death and the families & friends of the above.

**Concerns and/or Continued Prayers:** John Adamson, Barbara, Dorothy & Joey Baker, Olivia Barnett, Colleen Bishop (Bob Deit's cousin), Duane Brown, Jim Brown, Bob Burgi, Diane Calcaterra, Joan Carns, Billy Chapman, Bob & Eleanor Chesney, Sharon Clark (Fred Steinberg's sister), Cole family, Lee Collins (Lauren Collins-Mitchell's mom), Weldon & Ellie Conger, Frank Crosswhite, Jill Cummins, Don DeMoss, Jackie Douglass, Kathleen Dunn, Dee Etchevery, Dale & Inge Fitzpatrick, Claudia Freeman, Gen Garneski, Danna Gharavi, Lewis Gilbert, Ardeena & David Gillette, Sandy Govert, Todd Gregory, Lee Hageman, Viola Hammond (Don Hammond's Mom), Judy Hartenstein, Dennis Heil, Marlene Hertzburg, Lloyd Hetherington, Mary Lou Johnson, Dora Lou Keast, Mel & Mary Kilbo, Marge Klopshinski, Delores Larrew, John LaViolette, Bob Lofgren (Chris Houser's dad), Caroline Long, Larry Long, Marie Marsh, Virginia Marvel, Bert Mercer, Judy Miller, Lynn Moore, Connie Moran, Ed Nabbefeld (Dan Laux's uncle), John & Sally Neklas, Claudine Nielsen, Frank Norris, Helen O'Shirro (Marilynn Falk's sister), Kristin Pachero, George Parris, David Patterson, Mary Phelps, Victor & Lorraine Phillips, Norm Podrazick, Mason Pospeshil, Rev. Frances Rath (good friend of Rhymes), Heather Rider's mother, Kathy Rogers, Dena, Greg & baby Rowland (Phil Rowland's brother), William Schreiber, Richard Schutt (Wendy Rhymes' brother-in-law), Frank Smith, Mark Steinberg (Fred Steinberg's dad), Ella Stephens, Rick Sutter, Michelle Tackett & mom, Judy Tackett, Kasey Thompson, Midge Towell, Nancy Traugh, Kristene Valario, Karen Vee, Bill Waechter, Delwyn Warken-thien, Jerry Warren, Dick Welch (Ruth Waterman's brother), Lois Wirth, Bruce Yerrick and PRAYERS for the families (CAREGIVERS) of the above. PRAYERS for requests in the "CONFIDENTIAL PRAYER" boxes and those FOOD BANK CLIENTS who have requested prayer. PRAYERS for our MILITARY Personnel and their families.

### **Joys-but Still in Need of Prayers:**

Leslie Anzelmo, Dick & Eleanor Armstrong, Irene & Junior Blake (Paul Fillion's sister & brother-in-law), Robert Boehm, SSgt. John Briggs in Guam, Bob Brummitt, Sgt. Jeff Carroll in Iraq (Harriette & Jeff Downing's nephew), Bob Carter & family, Paul Casper, Mark & Donna Cleary, Craig Cmar (Marines), Bob & Marcia Cole, Weldon & Ellie Conger, Cliff & Lorraine Davidson, Chuck Dickinson, Ed Favia, (Army), Nancy Favia (Air Force Reserve), Andy & Danna Gharavi, Ross & Arline Hacker, Rich & Sheila Haraldson, Lorna & Jim Hartman, George & Beth Hayes (Jeff Hayes' parents), Ro & Dick Heinauer (Wayne Heinauer's parents), Amanda Hendersen in Iraq, Jim Hibbing, Chris Huston in Iraq (Ken Miller's grandson), Joe & Ginny Johnson, Henry Kaminski, Gladys Kay (Jane Hayes' Mom), Naomi Kyle, Jane Lambert, Cheryl Lang, Carol & Bill Lindemann, Earl & Eleanor Lindsay, Robert & Pauline Lymons, Michael & Susan Malloy, Sally Marvaino (Suzanne Jacobson's sister), Major Brian Martin in Afghanistan, Shirley & Merle Matzke, Todd Matzke in Iraq, Bryan McCann (Jeanette Lunstead's son), Neal McGough in Afghanistan, Larry & Pat McMann, Wilbur McMann, Liz Mid-daugh, Lloyd & Arlene McNeece, Hedy Moore (Jed Moore's Mom), John Phillips, Sylvia & Calvin Quinn, Ione Pierce, Icey Revis (Lynn Revis' mother-in-law), Shirley Schnuit (Nancy Petticrew's Mom), Helen Strickler, Emily Sutherland (Wendy Moore's grandmother), Audrey & Gregg Taran, Carl & Helen Thacker, (Jerry Thacker's parents), Lillian Thomas (Bill Thomas' mother), Bev & Jim Toppin, Marven & Wanda Tufte, Ray and Nancy Villeneuve, Lucy Weiland, Dick Wilcox, Dot Zelezic and the families of the above.

**Let us  
remember  
to pray  
daily**





## “ LAUGH A LITTLE” with Hu

### A TEST OF FAITH

A radio pastor heard this call, “Pastor, I was born blind and I’ve been blind all my life. I don’t mind so much being blind, but I have some well-meaning friends who tell me if I had more faith I could be healed.”

The radio pastor asked her, “Tell me, do you carry one of those white canes?”

“Yes, I do,” she answered.

“Then the next time someone tells you that, hit him/her on the head with your cane and say, ‘If you had more faith that wouldn’t hurt,’”

### CHURCH OXYMORONS

BRIEF MEETING

CLEAR CALENDAR

VOLUNTEER WAITING LIST

VISITATION PASTOR’S DAY OFF

REALISTIC BUDGET

CONCLUDING REMARKS

### DESIGNATED GIFTS FROM MEMORIAL-FUNERAL SERVICES

We are not aware of any for last month

### RESPIRE CARE NEEDED

**VOLUNTEERS** to give caregivers of Alzheimers and Parkinson’s disease a much needed hour or two of respite. If you have patience, a little free time and a desire to help, please contact Jeanette Lunstead or the church office at 982-3776.

### MIND MENDERS SUPPORT GROUP

Meets on the 2<sup>nd</sup> & 4<sup>th</sup> Fridays

At 10:00 a.m. in the Education Building.

This support group is for CAREGIVERS of anyone with Alzheimer’s or some form of Dementia.

*Contact Jeanette Lunstead  
or the church*

*office for more information.*

## Update: Randy Strickland

You may recall that Randy Strickland was our visitor in July who was in town to donate a kidney. Ron Walker recently heard from Randy, and wanted to share some of what he’s doing these days.

What Randy didn’t tell us when he was here was that he is the founder of the Maria Emilia Strickland Foundation, an organization formed in memory of his daughter Maria. Maria suffered from recurrent brain tumors for four years before succumbing at age 6 in December, 2006. According to the website, the foundation exists:

- ✠ To provide short-term, emergency housing, free of charge, for a family in need in the Montgomery, AL area.
- ✠ To establish, maintain, and supply, a school for children in the area of Esmeraldas, Ecuador and provide uniforms, one nutritious meal daily, textbooks, and school supplies free of charge. To provide a place for visiting medical personnel to examine children and provide medical care.
- ✠ To support the Methodist seminary students of Cuba by supplying computer equipment, software, and technical support for this equipment.

After Randy made his trip to Phoenix, the Foundation added a new fund—the Live Donor Assistance Fund, described below. The Foundation website can be accessed at: [www.mariaemiliastricklandfoundation.org](http://www.mariaemiliastricklandfoundation.org).

Mr. Strickland’s home church is Saint James United Methodist Church in Montgomery, Alabama.

#### Live Donor Assistance Fund.

This fund is established to provide financial assistance in the form of reimbursement of expenses incurred in association with organ donation. Assistance for travel, lodging, and meals serves as a means of removing financial restrictions potential donors may have. By providing this assistance the donor will experience less of a disruption to his/her financial wellbeing.



LaToya (recipient) and Randy (donor)



LaToya and Randy July 24<sup>th</sup>, 2008

# October

## *Birthdays*

|                               |    |                  |    |                    |    |
|-------------------------------|----|------------------|----|--------------------|----|
| Royce Brownfield              | 1  | Lizzie Steenbock | 11 | Cheryl Liles       | 20 |
| Linda Webber                  | 2  | Tracy Callahan   | 12 | Debbie Rowland     | 20 |
| Les Whiteaker                 | 3  | Juliette Decke   | 12 | Joyce Fillion      | 21 |
| Thomas Pease                  | 3  | Gene Miller      | 13 | Michael Adams      | 21 |
| Glenn Hulcher                 | 3  | Bill Hawkins     | 12 | Mary Ann Triplett  | 22 |
| Dr. James E. Jones DO Retired | 4  | Angie Wolfskill  | 12 | Jack Christie      | 22 |
| Heidi Jacobson                | 4  | Fred Miller      | 13 | Dave Flitsch       | 22 |
| Larry Wagner                  | 5  | Warren Sifferath | 13 | Sue Flitsch        | 22 |
| Jack Becker                   | 5  | Becky Beason     | 13 | Barbara Eckhardt   | 23 |
| Jason Crosswhite              | 5  | Linda Borders    | 13 | Eleanor Neumann    | 23 |
| Jaclyn Douglass               | 5  | Craig Saathoff   | 13 | Sean Sheridan      | 23 |
| Joan Gibbs                    | 6  | Lisa Cascaden    | 13 | Paul Ryan          | 24 |
| Joanne Rogers                 | 6  | Ed Weiland       | 14 | Rush Tucker        | 24 |
| Helena Van Englehoven         | 6  | Rosalie Eubanks  | 14 | Barbara Boggs      | 25 |
| Al Rasmussen                  | 6  | Roger Schiager   | 14 | Dick Van Noy       | 25 |
| Beth Cowles                   | 6  | Krista Durr      | 14 | Bill Myers         | 25 |
| Caleb Schow                   | 6  | Lauren Brown     | 14 | Herb Grills        | 25 |
| Charles Finley                | 7  | Karen Carnahan   | 16 | George Hutnak      | 26 |
| Pam Lux                       | 7  | Norma McKim      | 17 | RoseMarie Tallman  | 27 |
| Ellen Palmer                  | 7  | Gordon Lofgren   | 17 | Janet Daniels      | 27 |
| Adelyne Douglass              | 8  | Linda Lofgren    | 17 | Jane Durr Campbell | 27 |
| Betty Lou Hunter              | 8  | Martha Bergerson | 18 | Maxine Kitson      | 27 |
| Lillian Calihan               | 9  | Lester Norton    | 18 | Erik Olson         | 28 |
| Kay Batt                      | 9  | Diane Ward       | 18 | Jack Viviani       | 28 |
| Bonnie Becker                 | 9  | Bob Carnahan     | 18 | Harry McKinney     | 29 |
| Charles Webber                | 9  | Max Schuerman    | 19 | Leland Jensen      | 29 |
| Kevin Druding                 | 9  | Bobbi Aasheim    | 19 | Doris McKinney     | 29 |
| John Ewing                    | 10 | Judith Oakes     | 19 | Kekoa Fox          | 29 |
| Jenny Burgi                   | 10 | Paul Butler      | 20 | Doran Hays         | 30 |
| Peter Johnson                 | 10 | Kimberly Aston   | 20 | Norm Eriksen       | 31 |
| Teresa Konecek                | 10 | Ted Ofstedahl    | 20 | Linda Newkirk      | 31 |
| Ross Hacker                   | 11 | William Thomas   | 20 | Diane Sauerbrunn   | 31 |

## *Anniversaries*

|                           |    |                          |    |                           |    |
|---------------------------|----|--------------------------|----|---------------------------|----|
| Gerard & Adeline Muratore | 3  | Steve & Susy Hoesel      | 14 | Bill & Alice Myers        | 24 |
| James & Sarah Swails      | 5  | Bert & Muriel Mercer     | 15 | Alice Myers               | 24 |
| Robert & Ruth Bennett     | 6  | Jim & Carolyn Burt       | 15 | Shirley & Clarence Hodges | 24 |
| Lowell & Shirley Matthews | 8  | Roy & Donna Fuerherm     | 15 | Bill & Marlene Edwards    | 25 |
| Doug & Georgia Richardson | 10 | Richard & Joanne Ervin   | 16 | Bob & Bev Hart            | 26 |
| Pete & Ellie Marzahl      | 10 | Hap & Carol Howard       | 16 | Jerry & Jenna Hunt        | 27 |
| Philip & Debbie Rowland   | 11 | Ted & Sherrill Ofstedahl | 18 | Francisco & Angela Deleon | 28 |
| Mark & Donna Koppenhoefer | 12 | Sherrill Ofstedahl       | 18 | Renee & LeRoy Storley     | 29 |
| Warren & Sharee Sifferath | 13 | Don & Mary Ann Wing      | 21 | John & Jaci Allensworth   | 29 |



# United Methodist Women of Gold Canyon UMC

*The United Methodist Women includes all women of the church. We are dedicated to fellowship, friendship and service. We welcome all GCUMC women.*



## UMW Meeting Schedule Executive Board Meeting Monday, October 6th at 9 am Education Building

Please note, there will be no local Unit Meeting in October as the Central East District Annual Meeting and Leadership Training Event falls on the scheduled Saturday. This event is October 11th, 9:00 am to 3:00 pm, at Central United Methodist Church, 1875 N Central Ave., Phoenix. The theme this year is "Caring for One Another." And, something a little different, this year the morning event will be combined with the Central East District Church Conference. The guest speaker will be Sue Magrath speaking on "What Makes Us Well." Registration is \$10. Please call Diana Linton, if you are interested in attending.

### Remaining 2008 UMW Calendar Events

- October 2, St. Andrews Children's Clinic
- October 4, The Heart of Women, 11 am, Education Bldg.
- October 9, Stitches Unlimited, 1 pm, Education Bldg.
- October 11, CED Annual Meeting & Leadership Training Event at Central UMC
- October 11, Sidewalk SS lunches
- October 23, Stitches Unlimited, 1 pm Education Bldg.
- October 27, The Page Turners Book Club  
(Reading *The Cape Ann*, by Faith Sullivan)  
@ Melva Houtcooper's 480-354-4012
- November 1, The Heart of Women, 11 a.m.,  
Education Bldg.
- November 3, UMW Executive Board Meeting, 9 am,  
Education Bldg.
- November 8, UMW Unit Meeting, 9:45 am  
Guest Speaker, Tom Kollenborn, Local Historian
- November 19, Remembrance Service, 7 pm, Sanctuary
- December 8, UMW Executive Board Meeting, 9 am,  
Education Bldg.
- December 13, UMW Unit Meeting, 9:45 am  
Tea with Mrs. Claus & Cookie Exchange

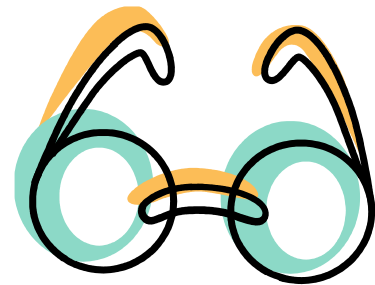


## YOU DID IT!

The school supplies you so willingly donated have been delivered and we returned with a big THANK YOU from Wesley Center. You are a blessing!

Here is a quick list of donations:

- 85 BIG boxes of crayons
- 144 folders
- 53 packages of notebook paper
- 85 bottles of glue
- 66 spiral notebooks
- 18 legal pads
- 50 packages of pens
- 10 back packs
- 50 packages of pencils
- 56 packages of colored pencils & Markers
- Many boxes of play dough, rulers, erasers, clips, pencil boxes & notebook pouches



## Collecting Donations for the Justa Center

Some of you may remember our speaker, Rev. Scott Ritchey from the Justa Center, on UMW Sunday in May. If you are not familiar with the Justa Center, I encourage you to visit their website at [www.azhomeless.org](http://www.azhomeless.org). It gives a very concise description of the work being done at this wonderful shelter for homeless seniors in Phoenix. We are, at this time, collecting supplies for the Justa Center. They are in need of eye glasses, coffee, sugar and non-dairy creamer. Please bring your donations to the church and we will deliver them at the CED Annual Meeting on October 11th. Thank you for your support!



UMW News Continued

## Ladies Get Involved with the Women's Ministries at GCUMC

UMW programs and areas of responsibility are growing and we need your help. "How can I help?" you ask. Volunteer! We're looking for lots of happy, willing women to volunteer. Have you ever been one of those not so willing volunteers who ended up loving whatever you signed up to help with? Volunteer! You might even enjoy helping out. We are not recruiting new members! If you are interested in helping out with one of the programs described below, you do not have to be a member, and I promise we will not steamroll you into more. Volunteer! There will be no arm twisting! And, if you are one of those types who needs to feel worthwhile, and, therefore, feeds on being begged to volunteer, please let us know, and we'll ask you a gazillion times! Please call today. God wants to use you too!

### Job Descriptions:

The second Saturday each month beginning in October, we need help preparing lunches for **Sidewalk Sunday School**.

**Chick Flicks** will resume in November. We are looking for someone to coordinate the hostesses each month. And, if you are interested in being a hostess for a matinee or an evening movie, please call.

**Beth Moore Bible Study** for women will begin mid-January '09. This bible study meets Wednesday mornings from 9-11 am, and is very popular in our church. Last year 100 women registered. We will need help with registration as well as the luncheon. We are also looking for co-leaders or facilitators.

In February we will be collecting books for our book sale in March sponsored by **The Page Turners Book Club**. We will need help sorting through books, categorizing, and scanning them for appropriateness.

The annual **Mother/Daughter/Friend Luncheon** will be March 21, 2009. This is another event that is well attended every year, and we need help planning this event – from decorations to a program to the menu.

**Women's Retreat** is in April. We need your help planning this event.

You can see just how busy we women are at GCUMC. And this isn't all!!! Did I mention **Heart of Women, Stitches Unlimited**, or **St. Andrews Children's Clinic**? If you have been thinking about where you might fit in, and any of these programs interest you, please call Diana Linton, UMW President, 671-0062, or Joanne Rogers, UMW Vice-President, 982-7401.

# STEPHEN MINISTRY®



*This is the message you heard  
from the beginning: We should  
love one another.*

1 John 3:11

### GRIEF—EASED BY A PROCESS

After the loss of a loved one due to divorce, death, or onset of a major/terminal illness, a big, big hole called "GRIEF" appears in your life. You are depressed, you are unable to perform everyday tasks, sleep is troubled, disposition is edgy, shoes are difficult to pick up and put on, laces are even more difficult to pull up and tie.

You are consumed by sorrow, loneliness, anger, guilt, self-pity, helplessness and the resulting frustration, all of which are destructive to your natural and acquired ability. **YOU'RE A BASKET CASE!**

No detour is offered around the pain of grief. You must pass through it. Not even time by itself can bring healing. Grief is eased by a process which involves understanding, patience and compassion — a process into and through which a Stephen Minister can lead you.

A Stephen Minister will help you face the pain, help you ease the grip on the source of your hurt, and help you turn around to enter the life God has provided all of us. A Stephen Minister can help you pray, an activity which may be new or forgotten in your life. In this process, God will enable you to one day look in a mirror and see a person who is whole and healthy, someone who has passed through the dark hole of terrible grief and reached peace.

Don't try to recover by yourself. If you are troubled, please call the office for a referral to our Pastor or to a Stephen Minister.



# Volunteers Do Make a Difference

GCUMC  
982-3776

Jane Hayes, Volunteer Coordinator

## “The Best Things in Life are Free.”

According to www.networkforgood.org, approximately 109 million American adults volunteer annually —that’s 56% of all adults. Volunteers contribute an average of 3.5 hours per week totaling 20 billion hours with an estimated dollar value of \$225 billion. 59% of teenagers volunteer an average of 3.5 hours per week to make 13.3 million volunteers totaling 2.4 billion hours at a total value of \$7.7 billion.

We are so blessed at GCUMC to have so many of you as volunteers.

Your efforts to make a difference in large and small ways allow us to find ways to help that will make our efforts worth the time and trouble we invest in them.

No one person can solve the world’s problems, but whatever you do can make a world of difference to make our little corner of the world a happier, healthier, safer place to live for those who need our help.



### Volunteers of the Month For September

Lovena Warren  
Steve Boyd  
Lorraine Phillips  
Mike Wittig



#### Are you a bicycle angel?

As Christmas approaches we would like to again offer bicycles to our Christmas Mission families, but need someone to overtake this area. Contact Jane Hayes if you would like to assist with this.



*\*\*Circle one or more of these options and place the form in the collection plate on Sunday, or drop by*

1. Custodial Assistant
2. Information Table
3. Office Assistant
4. Hospitality Team
5. Greeter
6. Funeral Dishes
7. Sunday School

-----  
Name \_\_\_\_\_

\_\_\_\_\_  
Phone \_\_\_\_\_

\_\_\_\_\_



**Gold Canyon United Methodist Church**  
 6640 S. Kings Ranch Road  
 Gold Canyon, AZ 85218  
 Phone: 480-982-3776  
 Fax: 480-671-0028  
 Office Email: GoldCanyonUMC@MindsPring.com  
 www.goldcanyonumc.org

**Non-Profit Organization**  
**U.S. Postage**  
**PAID**  
**Apache Junction, Arizona**  
**Permit No. 64**

Monthly Newsletter Deadline: 15th of the Month  
 Weekly Bulletin Insert Deadline: Noon on Wednesday  
 Flower Order Deadline: Noon on Wednesday  
 Please note that flowers are now \$30.00

**GCUMC Staff**

|  |   |
|--|---|
| Senior Pastor                                | Fred A. Steinberg                               |
| Minister of Pastoral Care                    | Hu Rhymes                                       |
| Associate Pastor, East Mesa New Church Start | Julius Keller                                   |
| Associate Pastor                             | Bob Deits                                       |
| Director of Education                        | Ellis Falk                                      |
| Director of Music Ministries                 | Douglas J. Benton                               |
| Associate Director of Music                  | David Ballard                                   |
| Director of Youth Ministries                 | Heather Rodenburg                               |
| Pianists                                     | Carol Ballard,<br>Linda Jones,<br>Marty Robison |
| Office Manager                               | Nancy Virden                                    |
| Administrative Associate                     | Suzanne B. Jacobson                             |
| Volunteer Coordinator                        | Margaret Ball                                   |
| Parish Nurse                                 | Jane Hayes                                      |
| Nursery Care Giver                           | Sue Malloy                                      |
| Facility Care Takers                         | Susan Kenyon<br>John LaViolette                 |



**OCTOBER SERVICE HOURS**

**\*9:30 AM—Traditional Worship  
 In the Sanctuary**

**\*10:50 AM—PRAISE  
 Service  
 In the Koinonia Room**  
 Music led by *Uncommon Grace*  
*\*Childcare Provided*

---

**5:00 PM—Country Western Service**  
 Music led by  
*One in the Spirit*

**On the Last Sunday of the Month  
 Music will be led by *The Housers***

**SUNDAY SCHOOL  
 SCHEDULE**

*All Children's Sunday Schools begin in the  
 Worship Service with their families. Children  
 are led to their classrooms after the Children's  
 Sermon.*

✠ **8:15AM ~ Adult Sunday School  
 Meets in Room 101**

✠ **9:30 AM ~  
 Children's Sunday School  
 Meet in Classrooms**

✠ **9:30 AM ~ Youth Sunday School**

✠ **10:50 AM ~  
 Children's Sunday School  
 Meet in Classrooms**